

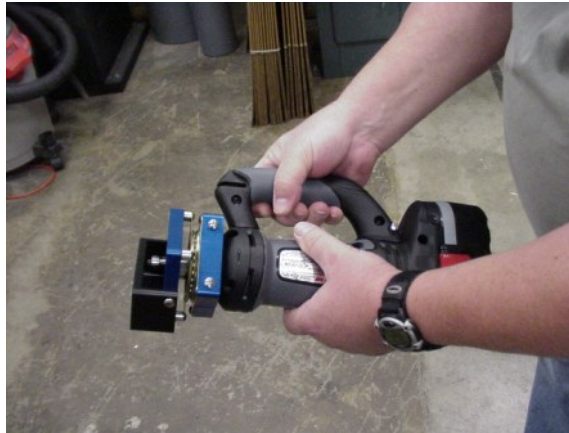
PB 150/200 Power Beveller Operation and Safety Instructions

Safety

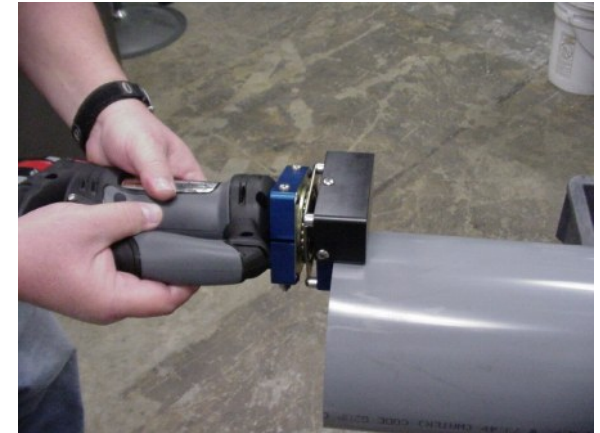
1. Do not allow fingers or any other part of the body to come in contact with the carbide cutting blade while it is in motion.
2. Safety glasses should be worn during the operation of this power tool.
3. Care should be used when storing the tool in the case. Try to protect the carbide cutting blade from other metallic objects that may have been placed in the case.

Operation

1. Grasp the handle with the right hand, holding the tool in line and square with pipe face.
2. With the left hand, rotate the plastic guard up and place the tool against the pipe face with the carbide cutting blade slightly above the pipe surface. (if the blade is resting on the pipe surface when the tool is turned on, the tool will quickly jump to the right)
3. Now with the left hand, pull out the red power on/off switch located near the base of the tool.
4. Slowly lower the tool to the pipe surface.
5. Rotate the tool counterclockwise while trying to maintain the tool square with the face of the pipe. Usually two or three revolutions around the pipe will produce the desired bevel. This process gets easier to perform after a few attempts.
6. After the bevel has been produced, raise the tool above the pipe surface and with the left hand, turn the tool off by pushing in the power on/off switch.



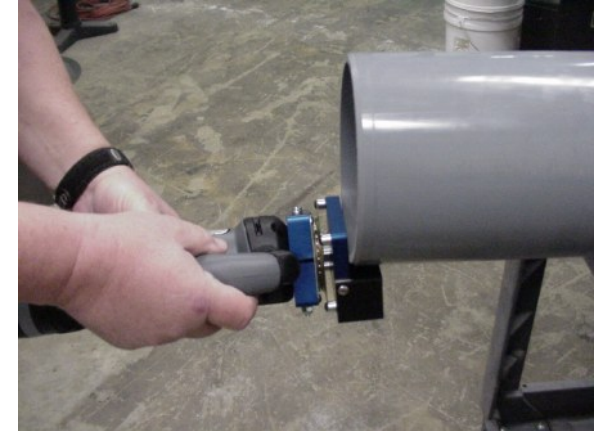
Step #1



Step #4



Step #2



Step #5



Step #3

